



Spare parts for:

Coffee grinders



Suitable for:

WEGA



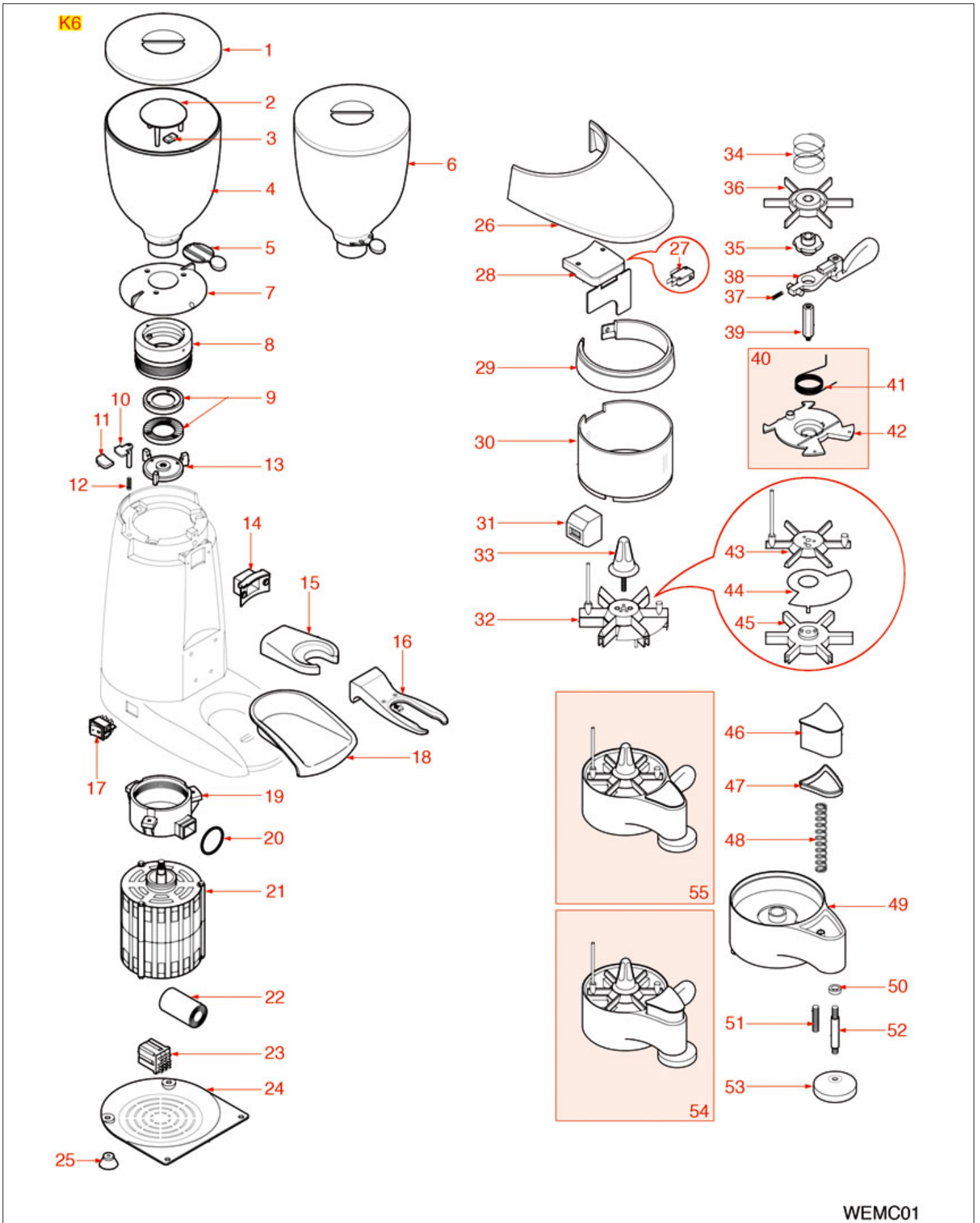
This catalogue is automatically generated.
Therefore, the sequence of the items might
not be always shown at best.
Updates will be issued in case of additions
and/or amendments.

Suitable universal spare parts may not be included





GRINDER ASSEMBLY K6





WEGA



Position	LF code no.	Description
1	1252366	COFFEE HOPPER LID
4	1080095	COFFEE HOPPER
5	1080096	COFFEE HOPPER CLOSING SHEET
7	1350802	DOSING ADJUSTMENT RING
9	1251093	GRINDING BURRS WEGA-COMPAK (PAIR) RIGHT
9	1251504	GRINDING BURRS COMPAK (PAIR) RIGHT
12	1250064	SPRING \varnothing 5x22 mm
13	1251604	GRINDING BURRS BOTTOM HOLDER K-6
14	1186738	COFFEE OUTLET GASKET
15	1162016	FILTER HOLDER FORK
16	1090802	FILTER HOLDER FORK
17	3319294	BLACK BIPOLAR SWITCH 16A 250V
18	1260004	COFFEE COLLECTION TRAY
20	3186343	O-RING 02106 EPDM
23	3351007	MINI RELAY 55.32 10A 240V 50/60Hz
25	1313551	SUCTION FOOT
27	1240059	MICROSWITCH 21A 250V
28	1252102	FLAP WITH MICROSWITCH BOX
29	1002511	CHROMEPLATED DOSER RING
30	1090810	DOSER CYLINDER
31	1252458	COUNTER FOR COFFEE GRINDER
32	1343001	PLASTIC STAR ASSEMBLY
33	1350801	DOSER ADJUSTMENT KNOB
34	1250951	STAR SPRING
35	1225031	6-TEETH PAWL
37	1250207	LEVER PIN SPRING \varnothing 4.5x24 mm
38	1225032	PLASTIC DOSER LEVER
42	1090803	DOSER BASE K6/K8
44	1343070	DIVIDING SHEET
48	1250195	COFFEE TAMPER SPRING \varnothing 15x85 mm
53	1439803	COFFEE TAMPER LOWER CAP \varnothing 56 mm



Suitable for:

WEGA



Suitable for:

Adjustment rings for coffee grinder

1350802 DOSING ADJUSTMENT RING

for Grinder-dispenser (ASTORIA CMA) K6
for Grinder-dispenser (COMPAK) K5OLD - K6OLD
K8OLD
for Grinder-dispenser (MARCFI-ANCAS) MD60 - MD70D
for Grinder-dispenser (WEGA) K6



WEGA WY28286006

Capacitors

3068016 CAPACITOR μF 10 450V 50/60Hz

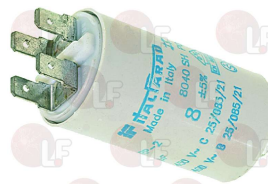
operating temperature $-25+85^{\circ}\text{C}$
in compliance with EEC 93/68 and 92/31 regulations



WEGA WY19050

3068014 CAPACITOR μF 8 450V 50/60Hz

operating temperature $-25+85^{\circ}\text{C}$
in compliance with EEC 93/68 and 92/31 regulations



WEGA WY19062001

Clamps

1168011 STAINLESS STEEL CLAMP FOR FLANGE PUMP



WEGA WY26310003

Containers for coffee

1080094 COFFEE HOPPER

for Grinder-dispenser (COMPAK) K3



WEGA WY28357002

1080095 COFFEE HOPPER

for Grinder-dispenser (COMPAK) K10 - K5 - K6 - K8



WEGA WY28357



Suitable for:

1080096 COFFEE HOPPER CLOSING SHEET



WEGA WY28326016

WEGA



Suitable for:

1252366 COFFEE HOPPER LID
for Coffee grinder (COMPAK) A8
for Grinder-dispenser (COMPAK) K10 - K5 - K6 - K8



WEGA WY28054002

1080506 COMPLETE COFFEE HOPPER
for Grinder-dispenser (COMPAK) K10 - K5 - K6 - K8



WEGA WY28357001

Counters

1252458 COUNTER FOR COFFEE GRINDER



WEGA WY28070005

Dosers for coffee

1002511 CHROMEPLATED DOSER RING
for Grinder-dispenser (COMPAK) K10 - K3 - K5 - K6
K8



WEGA WY28002012

1090507 CHROMIUM-PLATED COFFEE DOSER RH



WEGA WY28102001

1439801 DISPENSER LID



WEGA WY28054008

1090803 DOSER BASE K6/K8



WEGA WY28360026



Suitable for:

WEGA



1090810 DOSER CYLINDER
for Grinder-dispenser (COMPAK) D1 - D2 - K10 - K5
K6 - K8



WEGA WY28286001

Suitable for:
1090029 DOSER LID
for Grinder-dispenser (COMPAK) K10 - K5 - K6



WEGA WY28054012

Feet

1313551 SUCTION FOOT



WEGA WY28360015

Forks for portafilter coffee grinder

1090802 FILTER HOLDER FORK
for Grinder-dispenser (COMPAK) K10 - K5 - K6 - K8



WEGA WY28126006

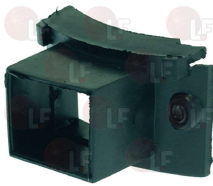
1162016 FILTER HOLDER FORK
for Grinder-dispenser (COMPAK) K3 - K5 - K6 - K8



WEGA WY28126011

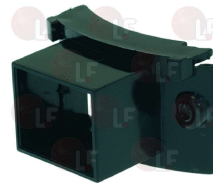
Gaskets and seals

1186738 COFFEE OUTLET GASKET



WEGA WY28022001

1252461 GASKET FOR COFFEE OUTLET OPENING



WEGA WX0008

1186223 O-RING 02056 EPDM



WEGA WY12330

3186343 O-RING 02106 EPDM



WEGA WY28159305

1186954 RETAINING GASKET



WEGA

Grinders

1251138 GRINDING BURRS COMPAK (PAIR) RH
external \varnothing 58 mm - internal \varnothing 33 mm
thickness 8.5 mm - 3 mounting holes
for Grinder-dispenser (COMPAK) K3



WEGA WY28217014

1251140 GRINDING BURRS COMPAK (PAIR) RIGHT
external \varnothing 82.5 mm - internal \varnothing 49 mm
thickness 9.5 mm - 3 mounting holes
for Coffee grinder (COMPAK) A8
for Grinder-dispenser (COMPAK) K8



WEGA WY28217011

1251504 GRINDING BURRS COMPAK (PAIR) RIGHT
external \varnothing 63.5 mm - internal \varnothing 38 mm
thickness 9 mm - 3 mounting holes
for Grinder-dispenser (COMPAK) K5 - K6



WEGA WY28217000

1251501 GRINDING BURRS PAIR COMPAK RH
external \varnothing 60 mm - internal \varnothing 36 mm
thickness 8 mm - 3 fixing holes
for Grinder-dispenser (COMPAK) K5



WEGA LF-1251091

1251092 GRINDING BURRS WEGA-COMPAK (PAIR) RIGHT
 \varnothing external 63 mm - \varnothing internal 38 mm
thickness 9 mm - 3 fixing holes



WEGA

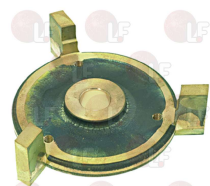
1251093 GRINDING BURRS WEGA-COMPAK (PAIR) RIGHT
 \varnothing external 80 mm - \varnothing internal 41 mm
thickness 10 mm - 3 fixing holes
for Grinder-dispenser (COMPAK) K8



WEGA WY28217005

Grinding burr holders

1251604 GRINDING BURRS BOTTOM HOLDER K-6



WEGA WY28360009



Suitable for:

WEGA



Suitable for:

Ironmongery (screws,nuts,washers)

1348025 BRASS NUT M3



WEGA WY23050

1348813 HEXAGONAL NORM.NUT M4 ST.STEEL UNI 5588



WEGA WY23030

1184012 S/STEEL SCREW T.C.C.E.I. M5x10 UNI 5931



WEGA WY23552

Knobs

1350801 DOSER ADJUSTMENT KNOB



WEGA WY28286003

Lamps

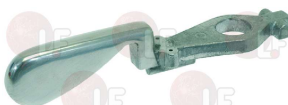
3221132 GREEN INDICATOR LAMP 230V
head \varnothing 13.5 mm - hole \varnothing 10 mm - 120°C
universal application



WEGA WY21011

Levers

1225034 METAL DOSER LEVER



WEGA WY28196005

1225032 PLASTIC DOSER LEVER



WEGA WY28196004



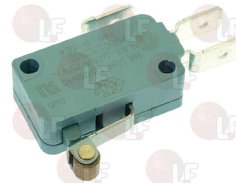
Microswitches

1252102 FLAP WITH MICROSWITCH BOX
complete with microswitch 21A 250V



WEGA WY2800207

1240016 MICROSWITCH 16A 250V
for Grinder-dispenser (ARISTARCO) SE/N



WEGA WY18253

3240123 MICROSWITCH 16A 250V



WEGA

1240059 MICROSWITCH 21A 250V



WEGA WY28165001

Pawls for coffee grinder dosers

1225031 6-TEETH PAWL



WEGA WY28159306

Pull-through brushes

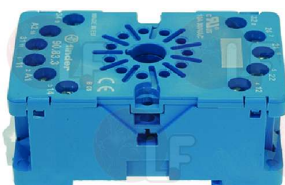
1384001 BRUSH FOR COFFEE SHOWER



WEGA WY15426

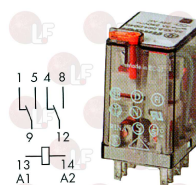
Relays

3351158 BASE UNDECAL ES11 10A 400V
11 poles



WEGA

3351007 MINI RELAY 55.32 10A 240V 50/60Hz
2 switching contacts
manual push-button



WEGA WY28286002



Suitable for:

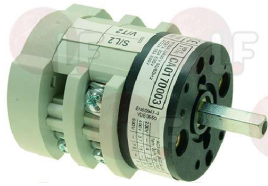
WEGA



Suitable for:

Rotary switches

1319001 SELECTOR SWITCH 0-1 POSITIONS 20A 290V
square pin 5x5 mm



WEGA WY18200

WEGA W10734

Springs

1250195 COFFEE TAMPER SPRING \varnothing 15x85 mm



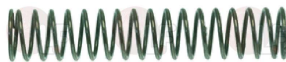
WEGA WY28360003

1250208 DOSER LEVER RETURN SPRING RIGHTHAND



WEGA WY28360027

1250207 LEVER PIN SPRING \varnothing 4.5x24 mm



WEGA WY28219012

1250064 SPRING \varnothing 5x22 mm



WEGA WY28219006

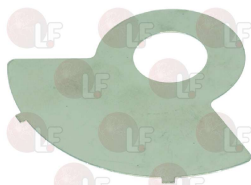
1250951 STAR SPRING



WEGA WY28219008

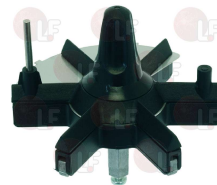
Stars and spare parts

1343070 DIVIDING SHEET



WEGA WY28190001

1343001 PLASTIC STAR ASSEMBLY



WEGA WY28002015



Switches

3319294 BLACK BIPOLAR SWITCH 16A 250V
with red led indicator light
mounting hole 30x22 mm



WEGA WY28165003

3319296 BLACK BIPOLAR SWITCH 16A 250V
with red led indicator light
max temperature 120°C
mounting hole 22x30 mm
for Grinder-dispenser (FIORENZATO C.S.) DOGECONICO DOGE63 - DOGE83
for Grinder-dispenser (SAN MARCO) SMLK - SMTK SM92 - SM97
for Grinder-dispenser (VIBIEMME) VB63 - VB83



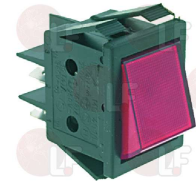
WEGA WY18263

3319016 RED BIPOLAR SWITCH 16A 250V
with indicator lamp
silk-screen print 0 - I
max temperature 120°C
mounting hole 22x30 mm



WEGA WY18260

3319019 RED BIPOLAR SWITCH 16A 250V
with indicator lamp
max temperature 120°C
mounting hole 22x30 mm



WEGA

3319501 SWITCH PROTECTION CAP
external dimensions 29x36 mm
for switches with mounting hole 22x30 mm



WEGA WY19049

Tampers for coffee

1439803 COFFEE TAMPER LOWER CAP ø 56 mm



WEGA WY28360021



Suitable for:

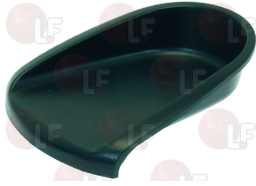
WEGA



Suitable for:

Trays

1260004 COFFEE COLLECTION TRAY
for Coffee grinder (COMPAK) A8
for Grinder-dispenser (COMPAK) K10 - K5 - K6 - K8



WEGA WY28400010

The data herewith contained may change without notice and LF SpA cannot be held responsible for possible errors stated or resulting by the use of this document. All rights reserved. No part of this publication may be reproduced without written permission by LF SpA.



LF SpA
via Voltri, 80 - 47522 Cesena (FC) ITALIA
Tel. +39 0547 34 11 11 - Fax +39 0547 34 11 10
www.lfricambi724.it - www.lfricambi724.mobi
info@lfricambi.it
Export Dept.: Tel. +39 0547 34 11 50 - Fax: +39 0547 34 11 55
www.lfspareparts724.com - www.lfspareparts724.mobi
export@lfspareparts.com

FRANCE



EPGC Sas
13, Rue des Forts - 59960 Neuville en Ferrain
Tél. +33 (0)3 20 25 06 21
Fax +33 (0)3 20 25 34 12
www.epgc.com
www.epgc724.mobi
epgc@epgc.com

DEUTSCHLAND



LF GmbH
Junkersstrasse, 1 - D-82178 Puchheim - München
Tel. +49 89 89 45 78 66
Fax +49 89 89 45 78 88
www.lfersatzteile724.de
www.lfersatzteile724.mobi
info@lfersatzteile.de

SCHWEIZ



LF GmbH Verkaufsbüro
Sennweidstrasse, 45 - CH-6312 Steinhausen
Tel. +41 (0)41 760 15 80-1
Fax +41 (0)41 760 15 85
www.lfersatzteile724.ch
www.lfersatzteile724.mobi
info@lfersatzteile.ch

ESPAÑA



LF Repuestos Horeca S.L.U.
Calle Ciudad Real, 10 - 45517 Escalonilla - Toledo
Tif. +34 91 477 91 00
Fax +34 91 477 90 81
www.lfrepuestos724.es
www.lfrepuestos724.mobi
info@lfrepuestos.es

UNITED KINGDOM



LF Spare Parts Ltd.
A10a Lakeside Business Park, Broadway Lane
South Cerney, Gloucestershire GL7 5XL
Tel. +44 (0)1285 86 16 25
Fax +44 (0)1285 86 39 49
www.lfspareparts724.co.uk
www.lfspareparts724.mobi
info@lfspareparts.co.uk

RUSSIA



OOO LF
ul, Anatoliya Zhivova, 8 - office 1 - 123100 Moscow
Tel. +7 499 259 85 75
Fax +7 495 725 26 53
www.lfspareparts724.ru
www.lfspareparts724.mobi
info@lfspareparts.ru

CHINA



LF China
Room 102, House 8, Lane 725, Mao Tai Rd.
Changning Dist. - 200336 Shanghai
Tel. +86 (0)21 33 53 66 31
Fax +86 (0)21 33 53 66 32
www.lfspareparts724.com
www.lfspareparts724.mobi
china@lfspareparts.com